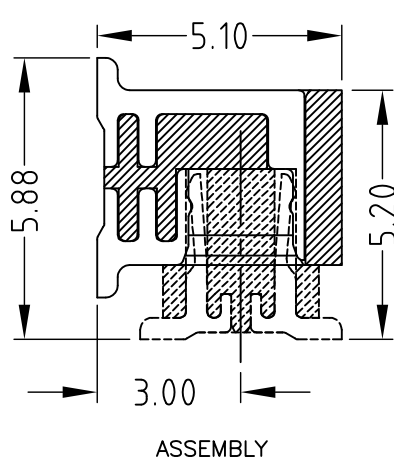
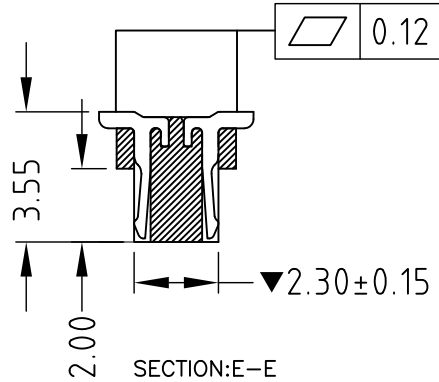
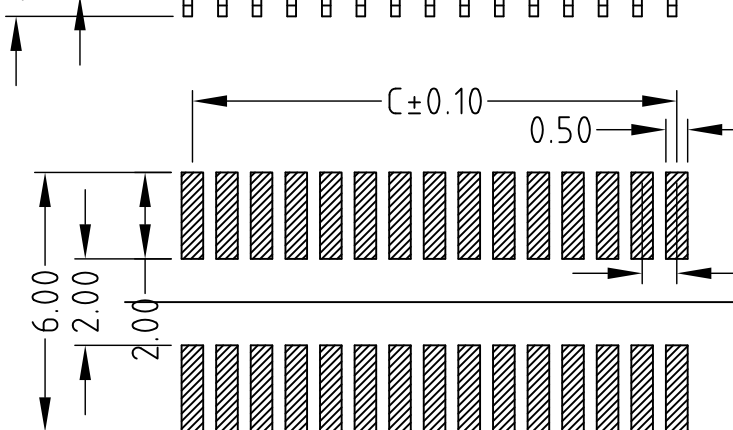
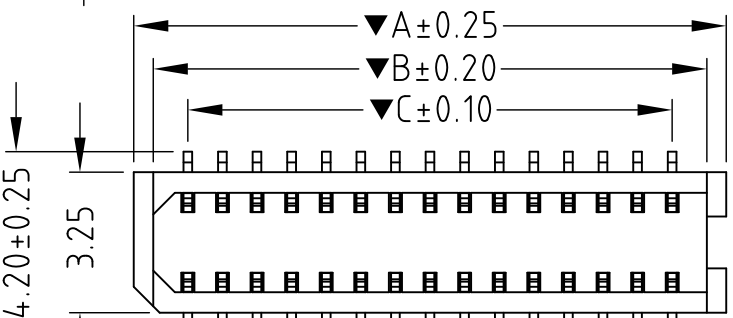
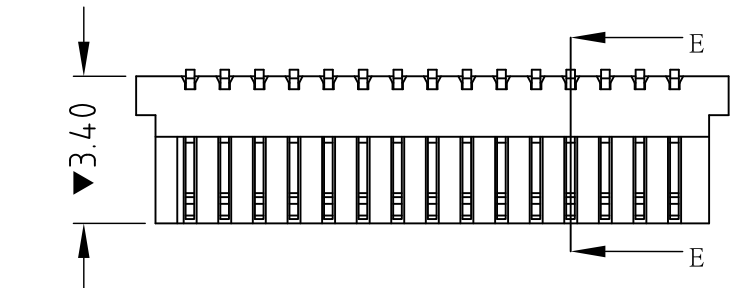
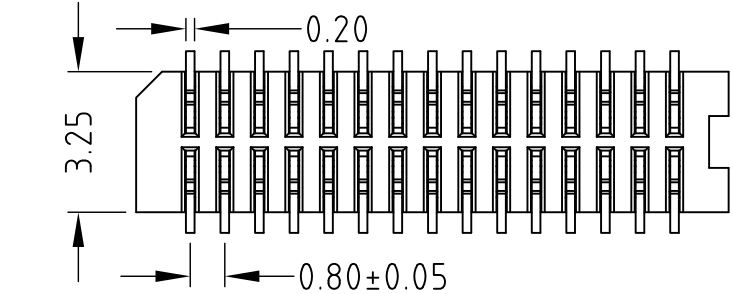


Rev 版次	Revision note 變更內容	Date 日期	DR 制圖
A0	Original Release	Jan.12,06'	Kenny_shi



Electrical
 Voltage:50V AC(RMS)/DC
 Current:0.5A AC(RMS)/DC
 Contact Resistance:90m Ω max
 Insulation Resistance:500M Ω min
 Dielectric Withstanding
 Voltage:150VAC/RMS
 Operating Temp:-20 °C ~ +85 °C
 "▼" IS IMPORTANT CONTROL SIZE.

PRODUCT INFORMATION:

BB080HM-SA-XX-X

10 TO 50 CONTACT

A: TUBE
 B: TAPE&REEL

No. of Contacts	Dimensions		
	A	B	C
10 (2*5)	5.7	4.8	3.2
12 (2*6)	6.5	5.6	4.0
14 (2*7)	7.3	6.4	4.8
16 (2*8)	8.1	7.2	5.6
18 (2*9)	8.9	8.0	6.4
20 (2*10)	9.7	8.8	7.2
24 (2*12)	11.3	10.4	8.8
26 (2*13)	12.1	11.2	9.6
28 (2*14)	12.9	12.0	10.4
30 (2*15)	13.7	12.8	11.2
32 (2*16)	14.5	13.6	12.0
50 (2*25)	21.7	20.8	19.2

RoHS COMPLIANT

② Terminal:Copper Alloy	n
① Housing:High temperature Plastic UL 94V-0	1
ITEM	DESC Q'TY

威納電子 WINPOINT ELECTRONIC CORP. www.winpoint.com.tw	Title 名稱 0.8 BOARD TO BOARD CONN. HOUSING ASSY SMT					
	DR: 制圖 Xuzhijhua	CHK'D 審核 Kenny_shi	APP'D 核准 Wang	REV. AO	UNIT [mm]	SHEET 1/2
PART NUMBER 威納料號 BB080HM-SA-XX-X	CUSTOMER P/N 客戶料號 -	DATE 日期 Jan.12,06'	GENERAL TOLERANCE 一般公差			MM .XX = ±0.38 .X.XX = ±0.18 .X.XXX = ±0.05 INCH .XX = ±0.015 .XXX = ±0.007 .XXXX = ±0.0020 UNLESS OTHERWISE SPECIFIED
DWG NO. 圖號 WP009-1202365-B	FILENAME 路徑 WP/009	SCALE 比例 N/A	ANGULAR ±3°			