

ENG.NO. W0012-1402021

B

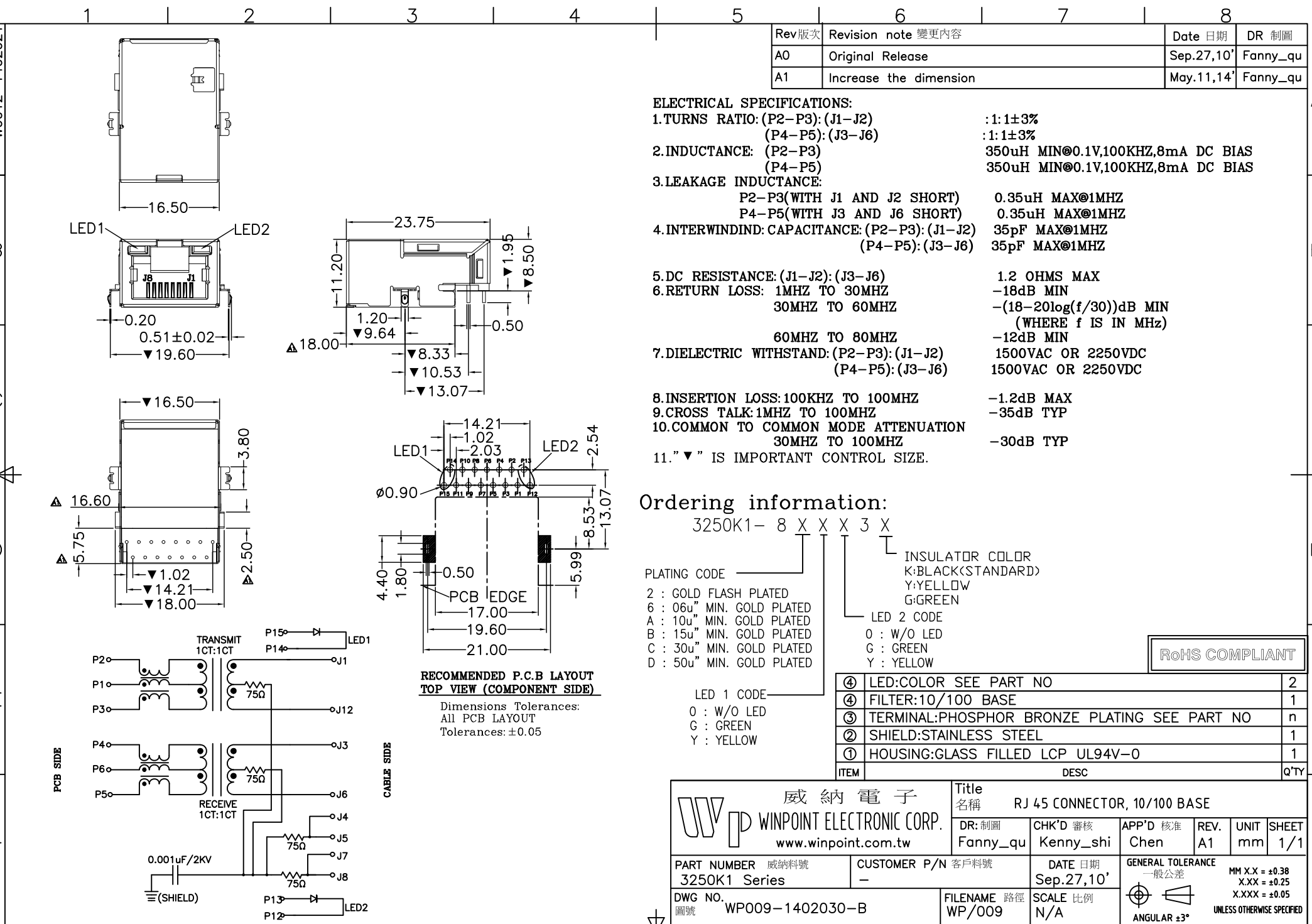
C

D

D

E

F



Rev 版次	Revision note 變更內容	Date 日期	DR 制圖
A0	Original Release	Sep.27,10'	Fanny_qu
A1	Increase the dimension	May.11,14'	Fanny_qu

- ELECTRICAL SPECIFICATIONS:**
1. TURNS RATIO: (P2-P3):(J1-J2) :1:1±3%  
(P4-P5):(J3-J6) :1:1±3%
  2. INDUCTANCE: (P2-P3) 350uH MIN@0.1V,100KHZ,8mA DC BIAS  
(P4-P5) 350uH MIN@0.1V,100KHZ,8mA DC BIAS
  3. LEAKAGE INDUCTANCE: P2-P3(WITH J1 AND J2 SHORT) 0.35uH MAX@1MHZ  
P4-P5(WITH J3 AND J6 SHORT) 0.35uH MAX@1MHZ
  4. INTERWINDING CAPACITANCE: (P2-P3):(J1-J2) 35pF MAX@1MHZ  
(P4-P5):(J3-J6) 35pF MAX@1MHZ
  5. DC RESISTANCE: (J1-J2):(J3-J6) 1.2 OHMS MAX
  6. RETURN LOSS: 1MHZ TO 30MHZ -18dB MIN  
30MHZ TO 60MHZ -(18-20log(f/30))dB MIN (WHERE f IS IN MHZ)  
60MHZ TO 80MHZ -12dB MIN
  7. DIELECTRIC WITHSTAND: (P2-P3):(J1-J2) 1500VAC OR 2250VDC  
(P4-P5):(J3-J6) 1500VAC OR 2250VDC
  8. INSERTION LOSS: 100KHZ TO 100MHZ -1.2dB MAX
  9. CROSS TALK: 1MHZ TO 100MHZ -35dB TYP
  10. COMMON TO COMMON MODE ATTENUATION 30MHZ TO 100MHZ -30dB TYP
  11. "▼" IS IMPORTANT CONTROL SIZE.

**Ordering information:**

3250K1- 8 X X X 3 X

- PLATING CODE
- 2 : GOLD FLASH PLATED
  - 6 : 06u" MIN. GOLD PLATED
  - A : 10u" MIN. GOLD PLATED
  - B : 15u" MIN. GOLD PLATED
  - C : 30u" MIN. GOLD PLATED
  - D : 50u" MIN. GOLD PLATED
- INSULATOR COLOR
- K:BLACK(STANDARD)
  - Y:YELLOW
  - G:GREEN
- LED 2 CODE
- 0 : W/O LED
  - G : GREEN
  - Y : YELLOW

RoHS COMPLIANT

ITEM	DESC	Q'TY
④	LED:COLOR SEE PART NO	2
④	FILTER:10/100 BASE	1
③	TERMINAL:PHOSPHOR BRONZE PLATING SEE PART NO	n
②	SHIELD:STAINLESS STEEL	1
①	HOUSING:GLASS FILLED LCP UL94V-0	1

<p>威納電子 WINPOINT ELECTRONIC CORP. www.winpoint.com.tw</p>	Title 名稱 RJ 45 CONNECTOR, 10/100 BASE					
	DR:制圖 Fanny_qu	CHK'D 審核 Kenny_shi	APP'D 核准 Chen	REV. A1	UNIT mm	SHEET 1/1
PART NUMBER 威納料號 3250K1 Series		CUSTOMER P/N 客戶料號 -		DATE 日期 Sep.27,10'		GENERAL TOLERANCE 一般公差
DWG NO. 圖號 WP009-1402030-B		FILENAME 路徑 WP/009		SCALE 比例 N/A		MM X.X = ±0.38 X.XX = ±0.25 X.XXX = ±0.05 UNLESS OTHERWISE SPECIFIED