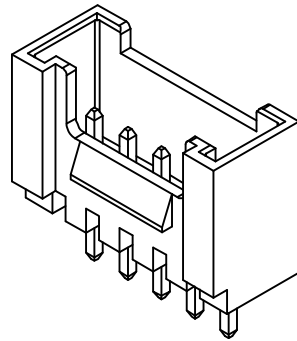
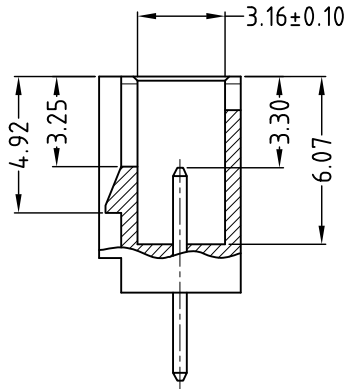
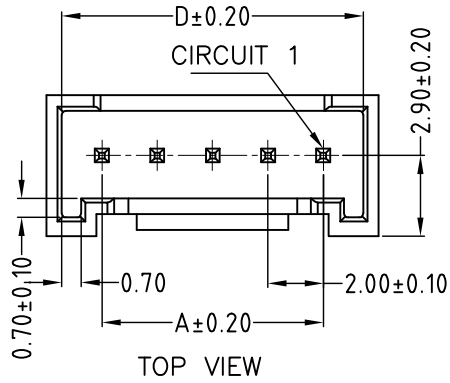


ENG.NO. W0007-1012154

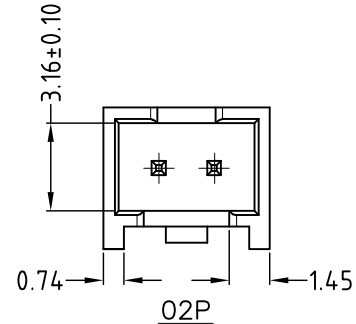
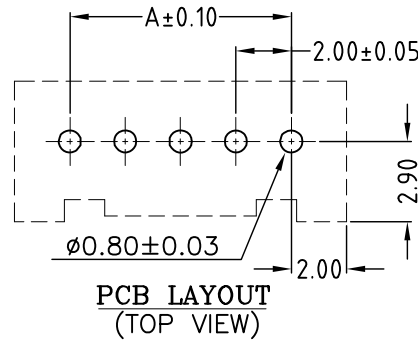
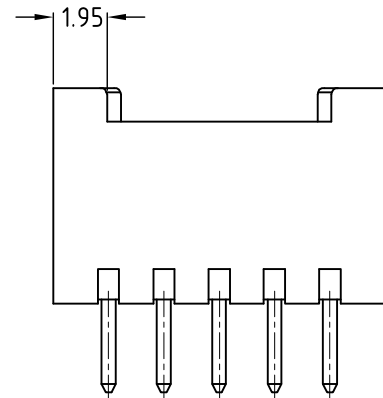
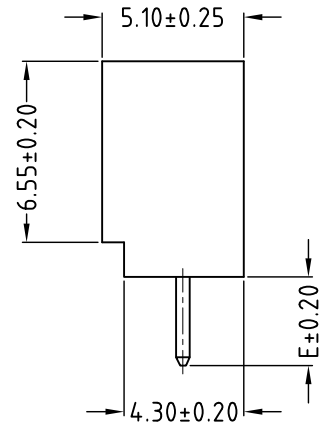
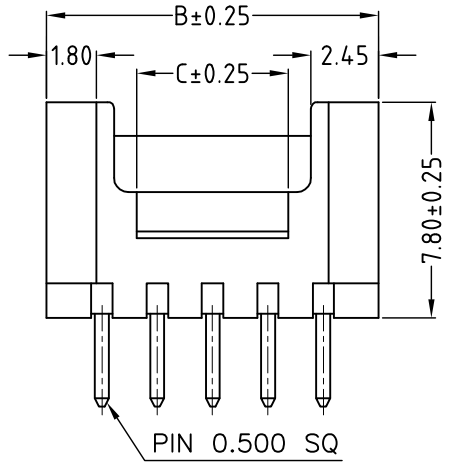
Rev 版次	Revision note 變更內容	Date 日期	DR 制圖
A0	Original Release	JAN.13,10'	Lijunhua



**SPECIFICATION:**

- 1.CURRENT RATING:3A AC/DC
- 2.VOLTAGE RATING: 250V,AC/DC
- 3.TEMPERATURE RANGE:-25°C~+85°C
- 4.CONTACT RESISTANCE: 30Ω MIN
- 5.INSULATION RESISTANCE:1000MΩ MIN
- 6.WITHSTAND VOLTAGE:1000V AC/MINUTE

CIRCUIT NO.	DIMENSIONS			
	A	B	C	D
02P	2.00	6.00	1.50	4.90
03P	4.00	8.00	1.46	6.90
04P	6.00	10.00	3.46	8.90
05P	8.00	12.00	5.46	10.90
06P	10.00	14.00	7.46	12.90
07P	12.00	16.00	9.46	14.90
08P	14.00	18.00	11.46	16.90
09P	16.00	20.00	13.46	18.90
10P	18.00	22.00	15.46	20.90
11P	20.00	24.00	17.46	22.90
12P	22.00	26.00	19.46	24.90
13P	24.00	28.00	21.46	26.90
14P	26.00	30.00	23.46	28.90
15P	28.00	32.00	25.46	30.90
16P	30.00	34.00	27.46	32.90



RoHS COMPLIANT

②	PIN MATERIAL:BRASS/GOLD-FLASH	XX
①	HOUSING:NYLON 46,UL 94V-0 BEIGE OR BLACK	1
ITEM	DESC	Q'TY

威納電子 WINPOINT ELECTRONIC CORP. www.winpoint.com.tw		Title 名稱 2.00 mm PITCH 180° WAFER	
DR: 制圖 Lijunhua	CHK'D 審核 Kenny_shi	APP'D 核准 Wang	REV. AO
PART NUMBER 威納料號 A2006WV-XXP	CUSTOMER P/N 客戶料號 -	DATE 日期 JAN.13,10'	GENERAL TOLERANCE 一般公差
DWG NO. 圖號 WP009-1101841-B	FILENAME 路徑 WP/009	SCALE 比例 N/A	MM .XX = ±0.38 .X.XX = ±0.18 .XX.XX = ±0.05 .XX.XX = ±0.015 .XXX = ±0.007 .XXXX = ±0.0020 UNLESS OTHERWISE SPECIFIED