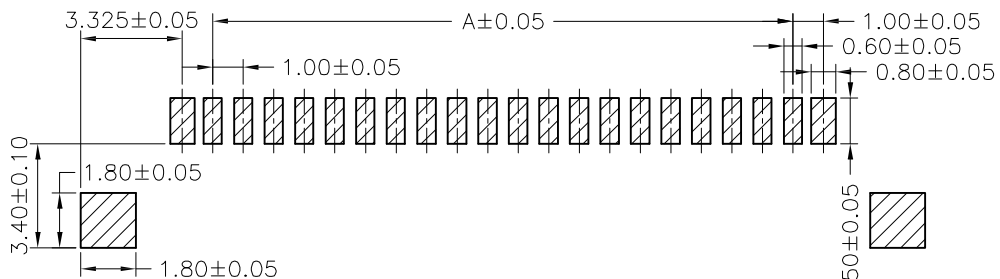
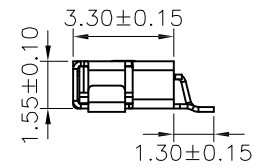
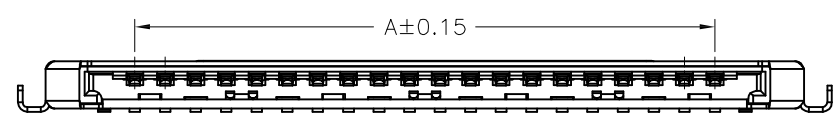
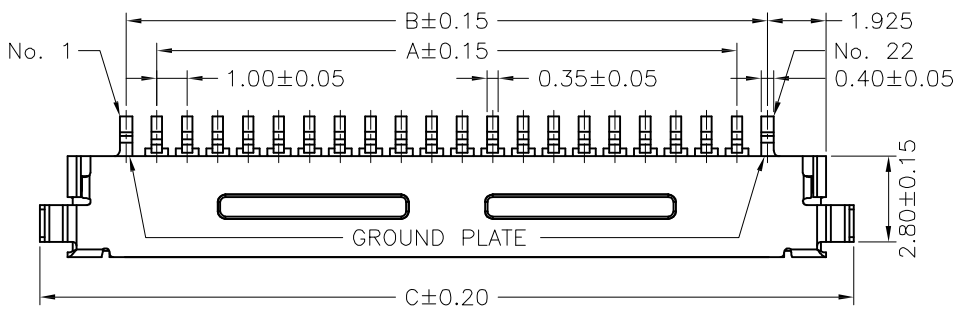
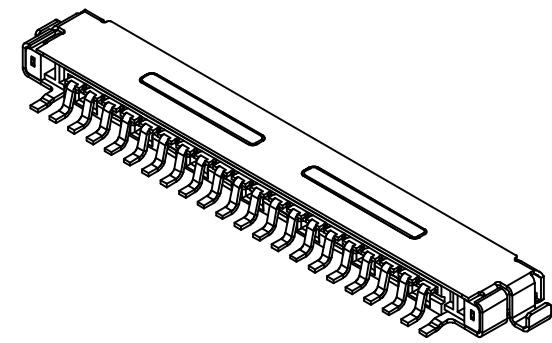


ENG.NO. W0007-1012144

Rev 版次	Revision note 變更內容	Date 日期	DR 制圖
A0	Original Release	DEC.11,06'	Lijunhua



P.C.B LAYOUT



SPECIFICATIONS

Current Rating: 1A AC,DC
 Voltage Rating: 200V AC,DC
 Temperature Range: -25°C ~ +85°C
 Contact Resistance: 40mΩ Max.
 Insulation Resistance: 100MΩ Min.
 Withstanding Voltage: 500V AC/minute
 Pin Material: Phosphor Bronze/Gold-plated
 Material: LCP,UL94V-0
 Shell: Phosphor Bronze/Tin-plated
 Color: Natural(Beige)

Ordering Information & Dimensions

PART NO.	Dimensions		
	A	B	C
A1006WR-S-20P	19.00	21.00	26.65
A1006WR-S-30P	29.00	31.00	36.65

RoHS COMPLIANT

威納電子 WINPOINT ELECTRONIC CORP. www.winpoint.com.tw	Title 名稱 1.00mm PITCH 90°WAFER-SMT TYPE					
	DR: 制圖 Lijunhua	CHK'D 審核 Kenny_shi	APP'D 核准 Wang	REV. AO	UNIT mm [INCH]	SHEET 1/1
PART NUMBER 威納料號 A1006WR-S-XP	CUSTOMER P/N 客戶料號 -	DATE 日期 Dec.11,06'	GENERAL TOLERANCE 一般公差			MM .XX = ±0.38 X.XX = ±0.18 X.XXX = ±0.05 INCH .XX = ±0.015 .XXX = ±0.007 .XXXX = ±0.0020 UNLESS OTHERWISE SPECIFIED
DWG NO. 圖號 WP011-1012812-B	FILENAME 路徑 WP/011	SCALE 比例 N/A	ANGULAR ±3°			

A4

CUSTOMER DRAWING