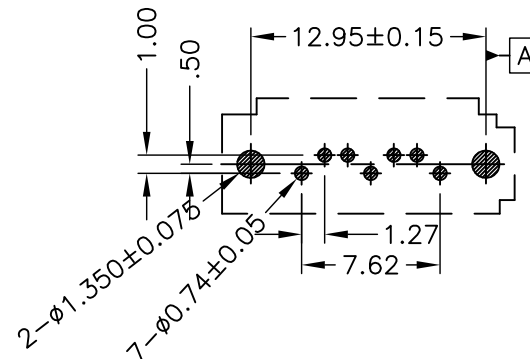
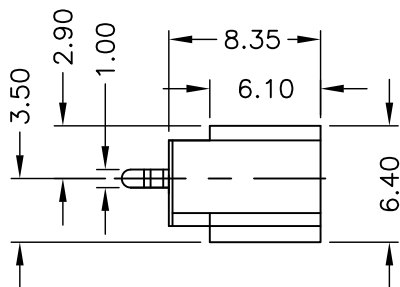
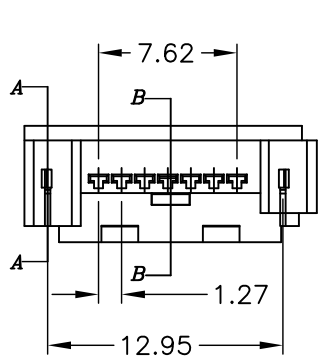


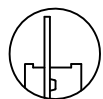
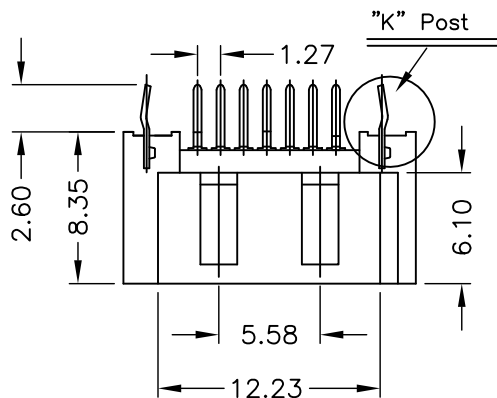
ENG.NO. W0045-1505046

ROHS COMPLIANT

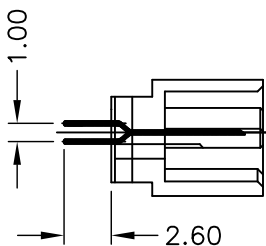
Rev 版次	Revision note 變更內容	Date 日期	DR 制圖
A0	Original Release	May.20,13'	Chenyq



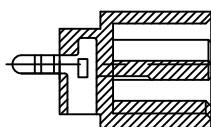
Recommended PCB layout



Straight Post



SEC B-B



SEC A-A

MECHANICAL:

1. Mating Force: 35N Max;
2. Unmating Force: 10N Min.

ELECTRICAL SPECIFICATION:

1. Rated Voltage And Current: Ac 100v Max, 1.5A Per Contact.
2. Insulation Resistance: 100MΩ. Min.
3. Contact Resistance: 30mΩ Max.
4. Dielectric Withstanding Voltage: 150V/AC.
5. Operating Temperature: -40°C~+85°C.
6. "▼" Is Important Control Size.

ORDERING INFORMATION

SATA0A-07T * * 0 * 2 *

Fork Options
K: "K" Post
S: Straight Post

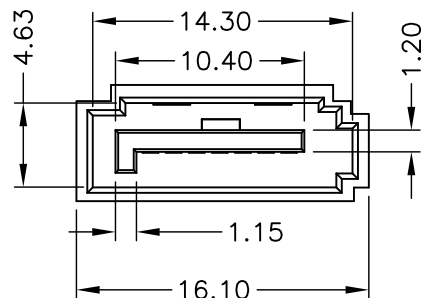
Packing Options
Blank: Tray
R: Tape&Reel
B: Tube

CONTACT PLATING

2: G/F
B: 15 u" Au
C: 30 u" Au
D: 50 u" Au

HOUSING COLOR

K: BLACK (STANDARD)
B: BLUE
R: RED
O: ORANGE



③	Fork:C2680R-H T=0.30,Tin、Gold Plating	2
②	Contact:C2680R-H T=0.25,Tin、Gold Plating	7
①	Housing:LCP+30%G.F. Black UL94V-0	1
ITEM	DESC	Q'TY

<p>威納電子 WINPOINT ELECTRONIC CORP. www.winpoint.com.tw</p>	Title 名稱 SATA7P/M 全包開窗A型					
	DR: 制圖 Chenyq	CHK'D 審核 Kenny_shi	APP'D 核准 Chen	REV. AO	UNIT mm	SHEET 1/2
PART NUMBER 威納料號 Refer to ordering info	CUSTOMER P/N 客戶料號 -	DATE 日期 May.20,13'	GENERAL TOLERANCE 一般公差			
DWG NO. 圖號 WP009-1505340-B	FILENAME 路徑 WP/009	SCALE 比例 1:1	<p>MM X.X = ±0.38 X.XX = ±0.25 X.XXX = ±0.05 UNLESS OTHERWISE SPECIFIED</p>			

A4

CUSTOMER DRAWING