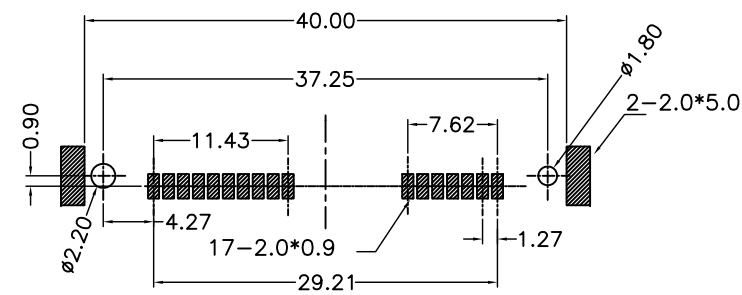
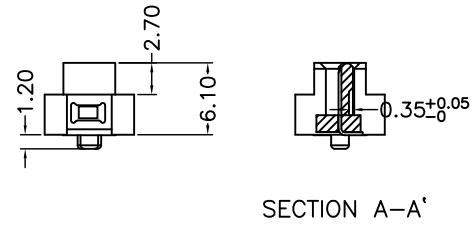
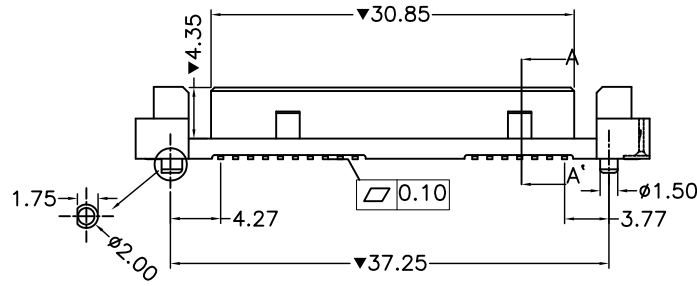
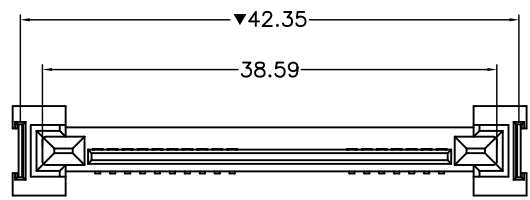
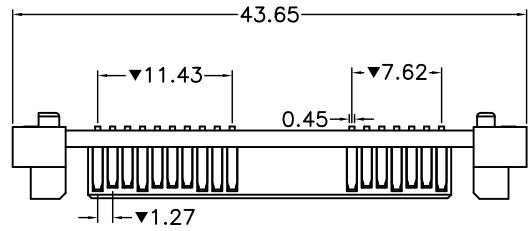


ENG.NO. XXXXXX

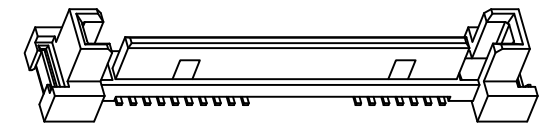
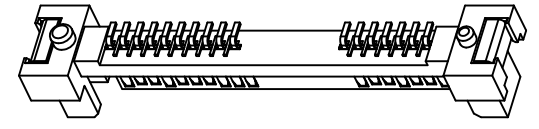
Rev 版次	Revision note 變更內容	Date 日期	DR 制圖
A0	Original Release	Mar.19,15'	Fanny_qu
A1	Add bump & cross section view.	May.09,15'	Kenny_shi



Recommended P.C.B Layout  
Component Side

Ordering information:

SATA01-75T1 X OK  
 Contact Plated  
 2 - Gold Flash  
 A - 10u" Gold  
 B - 15u" Gold  
 C - 30u" Gold



ELECTRICAL SPECIFICATION:

1. Insulation Resistance: 500 MΩ. Min.
2. Contact Resistance: 20mΩ Max.
3. Dielectric Withstanding Voltage: 500V/AC.
4. Operating Temperature: -40°C~+85°C.
5. "▼" Is Important Control Size.
6. Insertion Force: 45N Max;
7. Withdrawal Force: 15N Min. For Cycles 1 ~ 5  
10N Min. For 5~50

RoHS COMPLIANT

ITEM	DESC	Q'TY
③	Pad: Brass Tin/Ni Plating	2
②	Terminal: Copper Alloy, Gold Plated AT Contact Area, Tin Plated AT Solder Tail, Ni Underplated Overall.	17
①	Housing: LCP UI 94V-0 Color:Black	1

<p>威納電子 WINPOINT ELECTRONIC CORP. www.winpoint.com.tw</p>	Title 名稱 SATA Power&Data Connector 7+10Pin SMT Type		DR: 制圖 Fanny_qu	CHK'D 審核 Kenny_shi	APP'D 核准 Chen	REV. A1	UNIT mm	SHEET 1/1
	PART NUMBER 威納料號 Refer to ordering info	CUSTOMER P/N 客戶料號 -	DATE 日期 May.09,15'	GENERAL TOLERANCE 一般公差 MM X.X = ±0.38 X.XX = ±0.25 X.XXX = ±0.05 UNLESS OTHERWISE SPECIFIED				
DWG NO. 圖號 WP009-1503312-B	FILENAME 路徑 WP/009	SCALE 比例 1:1	<p>ANGULAR ±3°</p>					